

ČESKÝ ÚŘAD ZEMĚMĚŘICKÝ A KATASTRÁLNÍ

Pod sídlištěm 9/1800
182 11 Praha 8 – Kobylisy

V Praze dne 16. 12. 2009
Č.j.: ČÚZK 6766/2009-24

Cestovní zpráva ze zahraniční služební cesty do Irska

1. Úvodní informace

- | | |
|----------------------------------|--|
| a) Vysílající subjekt | Český úřad zeměměřický a katastrální |
| b) Termín a místo pracovní cesty | 29.11. - 2. 12. 2009, Dublin, Irsko |
| c) Přesné znění názvu akce | Plenární zasedání expertní skupiny zaměřené na kvalitu (EuroGeographics) |
| d) Účastníci cesty | Ing. Tomáš Cajthaml |
| e) Datum zpracování zprávy | 16. 12. 2009 |
| f) Cestovní zprávu schválil dne | předseda ČÚZK |

2. Časový přehled pracovní cesty

29. 11. 2009 Přílet do Dublinu, odjezd do hotelu
30. 11 - 1. 12. 2009 Celodenní účast na zasedání
2. 12. 2009 Účast na zasedání, odlet do Prahy

3. Program - projednávané otázky

Plenární zasedání zájmové skupiny pro výměnu znalostí ohledně kvality Q-KEN (Quality Knowledge Exchange Network) pořádala irská Ordnance Survey (OSI). Část jednání byla společná s jednáním části projektového týmu ESDIN. Kompletní program je přílohou č. 1. Dle úkolů stanovených v instrukčním úkolovém listu byly prezentovány tzv. národní reporty – příloha č. 3 a 4 a také prezentace na vybrané téma nových kontrol konzistence v ISKN – příloha č. 2.

4. Průběh pracovní cesty – obsah zajímavých příspěvků; osoby, se kterými bylo jednáno

V Dublinu se plenárního zasedání zúčastnilo 17 členů Q-KEN, kompletní seznam členů viz příloha č. 6. Plenární schůzi vedla Carol Agius, zápis z jednání je uveden v příloze č. 5, vedoucí skupiny Q-KEN, která zahájila plenární zasedání revizí minulého setkání v Hamaru a přivítala nového člena z Ordnance Survey (OS) Skotska. Informovala také o tom, že příští plenární zasedání se uskuteční v belgickém Bruselu 5. - 7. 5 2010 (Brusel), na podzim pak pravděpodobně ve Francii a další rok na jaře v Polsku. Novým členem koordinačního výboru Q-KEN se stala C. S. Sanchez (IGN Spain). V září proběhlo setkání koordinačního výboru v Londýně, na kterém byla diskutována otázka certifikace kvality a zároveň byl pozván na plenární zasedání Matt Beare, nyní nově zástupce vedoucího pracovní skupiny kvality OGC (Open Geospatial Consortium). Ze zajímavých příspěvků plenárního zasedání Q-KEN lze uvést následující:

Příručku pro metadata (**ESDIN Metadata Guidelines**) vznikající v rámci projektu ESDIN prezentovala **Frederique Williams** z IGN France. Metadata jsou rozdělena do celkem tří úrovní, pro vyhledávání, vyhodnocení a pro využití metadat. V ESDIN je práce s metadaty zaměřena na tvorbu příručky a publikování zpráv o kvalitě v kontextu s topografickými a administrativními referenčními informacemi velkých a malých měřítek. Pro první dvě fáze jsou zapotřebí ISO 19115 a ISO 19119 s podporou pro standardy ISO 19103, ISO 19107 a ISO 19108. Pro poslední fázi je nutné brát v potaz také ISO 19110, ISO 19111, ISO 19112, ISO 19117 a ISO 19130. Při implementaci těchto standardů je nutné přihlídnout k souvisejícím standardům nejen skupiny ISO/TC, ale i samotné ISO. Návrh příručky by měl být vytvořen v lednu 2010 a uveden v březnu 2010.

Antti Jakobsson –prezentoval informace o aktuálním stavu projektu ESDIN a novinkách EuroGeographics. Státní mapovací služby (SMS) musí prokázat kvalitu spravovaných dat oproti ostatním ve vládních koncepcích, proto vzniká model kvality ESDIN, který by měl odpovědět na otázku: Je realizovatelné implementovat tento model kvality na data SMS a kolik to bude stát? Jak bude model vypadat a jaká je jeho přidaná hodnota? Pro zodpovězení otázek je připravován dotazník, jehož uvedení bylo posunuto. Nový termín pro jeho přípravu je polovina února 2010, rozeslání a první analýza by měla proběhnout do konce března 2010. Výsledky by měly být prezentovány na dubnovém workshopu.

Matt Beare (1Spatial) – nově zástupce předsedy OGC pracovní skupiny na kvalitu (**OGC DQ WG**) prezentoval informace o činnosti této skupiny. Informoval, že podle analýz z dotazníku OGC polovina zúčastněných zemí nemá vyjasněný přístup ke kvalitě dat. OGC DQ WG odstartovala svoji práci v roce 2007, mezi hlavní témata skupiny se řadí: přesnost, úplnost, konzistence a integrita, definice a jazyk, a měřítko. Současné aktivity představují hledání případů užití pro polohovou přesnost, nejistot a přesnosti, logické konzistence a úplnosti. Snahou OGC DQ WG je na základě nich vyvinout reálné scénáře pro různé požadavky zákazníků a uživatelů, a specifikovat procesy a cíle pro jejich zajištění. Dalším

z cílů je podílet se na tvorbě evropské prostorové infrastruktury prostorových dat (ESDI) skrze transformační procesy obsahující prvky kvality.

Carol Agius – informovala o výhodách, které mohou čerpat členové **Q-KEN**. V první řadě to jsou diskusní fóra a zvýšená komunikace mezi jednotlivými plenárními zasedáními, v druhé řadě to jsou technické znalosti jako rozšíření a výměna informací, prohloubení znalostí a přístup k dalšímu množství informací. Q-KEN je součástí KEN (Knowledge Exchange Network) jejíž model zahrnuje přístup ke znalostem – knowledge - (webová stránka pro členy, přístup k online dokumentům, bázi znalostí založené na klíčových slovech – nově diskutováno v koordinačním výboru) a oceněním (certifikát odborníka na kvalitu – popsána kritéria pro jeho získání); pro výměnu – exchange – personální a technickou (možnosti stáží atp.), a virtuální výměny (seminářů na Internetu – webinars, EuroGeoforum); vytváření komunit – network – během plenárního zasedání, udržování společných sdílených dokumentů a další možnosti.

Spatial Studio – Devenor, www.devenor.com, softwarová společnost založená v roce 2006, dříve Syscon a Sysdeco, jejíž zástupce prezentoval nástroj pro prohlížení, analýzu a editaci prostorových dat na platformě .NET & C#. Editace společné hranice byla předvedena na hranici společné pro 7 vrstev, obdobně je tomu pro vedení budov na/př hranici, tzv. konzistentní editace. Obdobným způsobem je možné vést adresní body na základě předem stanovených pravidel. Software je připraven na 64-bitovou architekturu, pro Windows 7, paralelní zpracování s využitím nejmodernějších technologií.

Bernard Farell (OSI Future Developments , Data Strategy & Development - Senior Data Manager) představil nový datový model OSI označovaný jako **Prime2**. Původně byl připravován model Prime od roku 2006, v roce 2009 započaly práce na vývoji Prime2. Plnění dat do nového datového modelu je zajištěno prostřednictvím digitalizace původních map, ve spolupráci s poštovními úřady jsou zařazovány adresy – zodpovědnost za různé druhy dat se nemění. Model adres je kompatibilní s INSPIRE a je také vytvořen podle mezinárodních případových studií. Datový model Prime2 je založen na principech kompatibility s 3D, nezávislosti na měřítku, bežešvosti apod. Tender je založen na spolupráci třech subjektů: 1Spatial, Snowflake a RMS. Původní model z roku 2006 byl přemodelován – konceptuálně, a po fyzické a logické stránce. Reference brané v potaz jsou z ISO, OGC, OSGB, OSNI, Dutch Cadaster, SwissTopo a INSPIRE. Současný stav Prime2 je ve verzi druhého prototypu, který bude vydán cca v únoru 2010, interní testování by mělo být ukončeno koncem roku 2010, migrace dat by měla proběhnout podle časového plánu ve třetím kvartálu roku 2011, kompletnost dat potom v roce 2012. 3D model obsahuje u geoprvků atribut výšky, podle kterého se objekty překrývají (např. silnice).

Gunhild Lonberg informovala o aktuálním stavu vývoje **ISO 19157 – Data Duality**. Vývoj normy je koncipován tak, aby byla připravena během roku 2011, připomínky k ní a její akceptace do května roku 2012. Členem ISO pracovní skupiny jsou zástupci Antti Jakobson, Nicolas Lessage a Frederique Williams. Nově jsou začleňovány do normy vazby na normu ISO 19131 a ISO 19158 a ISO 19115 a ISO 9000. Objevil se nový termín geodata a metakvalita, které jsou zvažovány k začlenění do normy. Je upravována definice kvality tak, aby byla v souladu s ISO 9000. Současně jsou rozšiřovány prvky kvality, především nekvantitativní povahy.

Carol Agius – závěr a shrnutí, zástupce belgické SMS nabídnul konání příštího plenárního mítinku v Bruselu, další potenciální místa jsou ve Francii a v Polsku. Je připravována prezentace z Finska, kde státní mapovací služba získala státní ocenění za implementaci kvality. Navržený termín příštího zasedání je 5. - 7. 5. 2010 v Bruselu.

5. Technická dokumentace – příložit nebo odkaz, kde je k nalezení

Dokumentace uvedených prezentací všech přednášek je k dispozici na adrese: <http://www.eurogeographics.org/content/dublin-meeting-2009>, v sekci přístupné pro členy skupiny. Dále je ke zprávě přiloženo:

Příloha č. 1 – Program plenárního zasedání



**Plenary meeting of the
Quality Knowledge Exchange Network
Dublin, Ireland
30 November – 2 December 2009
Agenda**



| | <i>Item</i> | <i>Lead</i> |
|-------------------------|--|--|
| 30 Nov Day 1 | Q-KEN Meeting (ESDIN WP8 meeting at same time -- different room) | |
| 8:00 | Shuttle bus departure from Parkgate Street to Farmleigh | |
| 8:30 – 9:00 | Coffee | |
| 9:00 – 9:15 | Opening of the meeting | Host Organisation |
| 9:15 – 9:45 | Introduction, main decisions from Hamar and main objectives and outstanding actions, Report from CC meeting in London, Future plenary meetings | Carol Agius |
| 9:45 – 10:00 | News from Head office | Antti Jakobsson |
| 10:00 – 10:30 | National presentation 1 | Greece (O. Mavrantza) |
| 10:30 – 11:00 | Coffee break | |
| 11:00 – 11:30 | National presentation 2 | Croatia (S. Lemajic) |
| 11:30 – 12:00 | National presentation 3 | Czech R (T. Cajthaml) |
| 12:00 – 12:15 | Update of terminology | Ourania Mavrantza |
| 12:15 – 12:30 | Update on Change Detection from Austria | Karl Haussteiner |
| 12:30 – 13:30 | Lunch | |
| 13:30 – 13:45 | Introduction to Group Work - INSPIRE – Interoperability | Christina Wasström |
| 13:45 – 15:00 | Breakout session Group work (aiming for 3 groups) | Christina Wasström (Celia, Ourania) |
| 15:00-15:30 | Coffee break | |
| 15:30 – 16:00 | Presentations of group work and discussion | Christina, Celia, Ouranja |
| 16:00 --16:30 | National Reports | Gunhild Lönnberg |
| 16:30 – 16:45 | National Reports (selection of future presentations) | Gunhild Lönnberg |
| | <i>End of day</i> | |
| 17:15 | Shuttle bus departure from Farmleigh to Parkgate Street | |
| | | |
| | | |
| 1 Dec Day 2 | Q-KEN Meeting with ESDIN WP8 | |
| 9:00 | Shuttle bus departure from Parkgate Street to Farmleigh | |
| 9:30 – 9:45 | Status of the ESDIN Project | Antti Jakobsson |
| 9:45 – 10:00 | General approach to Quality Evaluation & Semi-Automatic Quality Evaluation | |
| 10:00 – 10:15 | ESDIN quality Model | |
| 10:15 – 10:45 | Metadata guidelines | |
| 10:45 – 11:15 | Coffee break | |
| 11:15 – 11:30 | Discussion – Q-KEN as a reference group to ESDIN | Antti Jakobsson |
| 11:30 – 12:15 | OGC Working Group on Data Quality | Matt Beare |
| 12:15 – 12:30 | Information and introduction to BM | Jonathan Holmes |
| 12:30 – 13:30 | Lunch | |
| | Q-KEN Meeting (ESDIN WP8 meeting at same time -- different room) | |
| 13:30 – 14:15 | Quality Evaluation BM work plan | Jonathan Holmes |
| 14:15 – 14:40 | Status of INSPIRE | Christina Wasström |
| 14:45 – 15:00 | Coffee break | |
| 15:00 – 15:30 | INSPIRE reports | Christina Wasström |
| 15:30 – 16:30 | Commercial presentation | Devenor |
| 16:30 | <i>End of meeting</i> | |
| | | |
| 16:45 | House Tour of Farmleigh | |
| 17:30 | Reception followed by Official Dinner in Farmleigh | |

| | | |
|------------------------|--|--------------------------|
| 2 Dec Day 3 | Q-KEN Meeting | |
| 8:00 | <i>Shuttle bus departure from Parkgate Street to Farmleigh</i> | |
| <i>8:30 – 9:00</i> | <i>Coffee</i> | |
| 9:00 – 10:00 | Presentations from the Host organisation | <i>Host Organisation</i> |
| 10:00 – 10:30 | Status of Quality Standards – ISO 19157 | <i>Gunhild Lönnberg</i> |
| <i>10:30 – 11:00</i> | <i>Coffee break</i> | |
| 11:00 – 12:00 | Benefits to Members <ul style="list-style-type: none"> - Certificate Quality Practitioner - Eurogeoforum - Webinar - Circulation of Q-KEN information (New mailing list) - Technical exchange (Celia) - Information about the new EG website | <i>Carol Agius</i> |
| 12:00 – 12:30 | Q-KEN workplan | <i>Jonathan Holmes</i> |
| 12:30 – 13:00 | Conclusions and agreed actions | <i>Carol Agius</i> |
| <i>13:00 – 14:00</i> | <i>Lunch</i> | |
| | <i>End of meeting</i> | |
| 14:15 | <i>Shuttle bus departure from Farmleigh to Parkgate Street</i> | |
| 14:30:15:00 | Visit to O Donovan Room – <i>Museum Celebrating 185 years of OSi history</i> | <i>Ken Noble</i> |
| 15:17 | <i>Shuttle bus departure from OSi to Parkgate Street</i> | |



The Information System of the Cadastre of Real Estates – new data consistency checking methods

Tomas Cajthaml, COSMC



Agenda

- Introduction to the COSMC
- IS CRE – Information System of the Cadastre of Real Estates
- Current basic quality assurance procedures in IS CRE
- New data consistency checking methods
- Conclusion



COSMC position

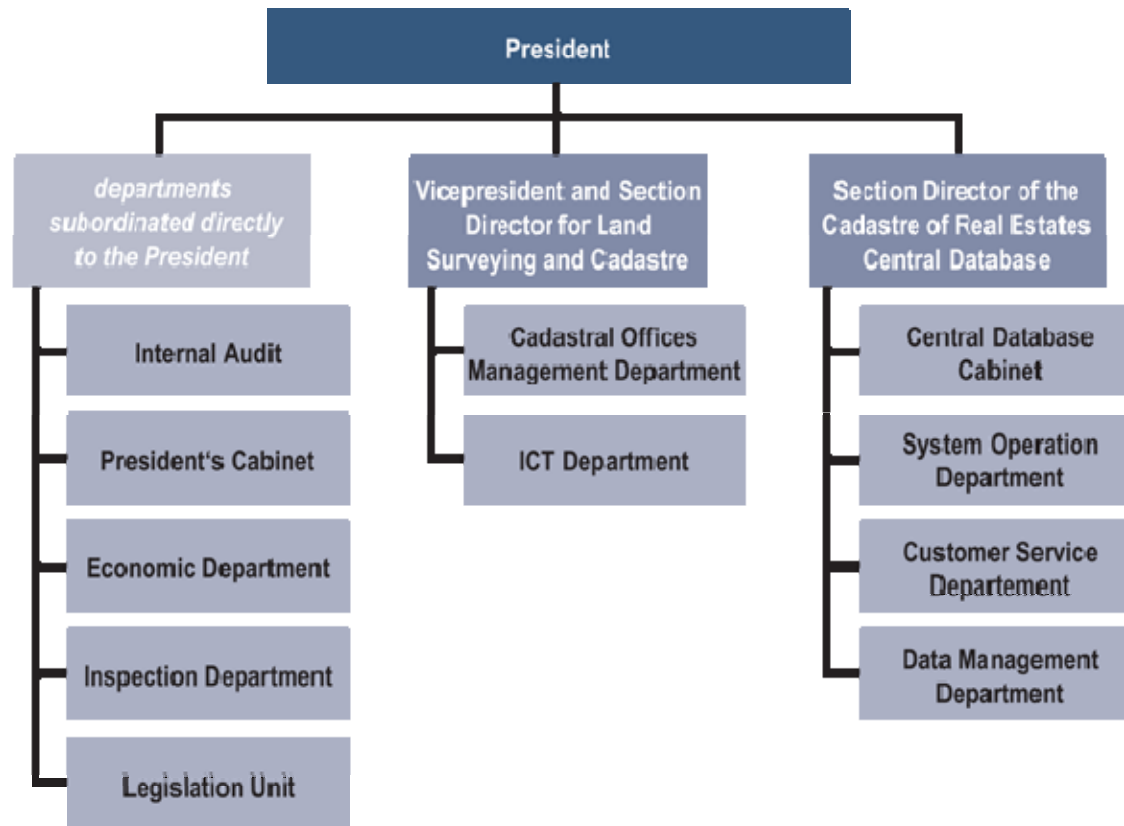
- Administration of Cadastre of Real Estate is performed by 14 cadastral offices in regions and 114 subordinated offices, 80% of all activities in the sector of the Czech Office for Surveying, Mapping and Cadastre - COSMC
- Since 1993 cadastral offices have been given the power to make decisions about entries of proprietary and other rights in relation to real estate into the cadastre – cadastral law



Responsibility

- Complete administration of the Cadastre (including legal relations to real estate property),
- Maintenance and modernisation of horizontal, vertical and gravity control in the Czech Republic,
- Large-scale mapping (cadastral maps, derived 1:5.000 State map), medium-scale mapping (Base map of the Czech Republic 1:10 000, 1:25 000, 1:50 000, 1:100 000, 1:200 000), small-scale mapping of the Czech Republic (1:500 000, 1:1 000 000),
- Creation of the Fundamental Base of Geographic Data (ZABAGED),
- Geodetic surveys and documentation of state boundaries,
- Standardisation of geographical names,
- Coordination of research and international cooperation in geodesy, cartography and cadastre

Structure, staff





COSMC I.

- COSMC is top umbrella governmental body for both Cadastre of Real Estates and also for surveying and mapping
- The president of COSMC is subordinated only to the prime minister of the Government. The Office has its own account in the State budget of the Czech Republic
- Cadastre of real estates is Administered by 14 regional cadastral offices with 107 cadastral workplaces, regional competence, about 5000 employees - Cadastral Offices – update responsibility
- 7 Survey and Cadastral Inspectorates (90 employees) supervise the performance of cadastral offices and those activities of private companies and licensed surveyors performed for the state administration.



COSMC II.

Land Survey Office – responsible for surveying with country wide competence focused on:

- Geodetic control Maintenance and modernisation, State map series production ~ medium- and small-scale official mapping, ZABAGED – basic GIS database, GEOPORTAL, surveying along state borders, network of permanent GPS stations, geodetic surveys and documentation of state boundaries ... etc.
- 380 employees

Czech cadastre of real estates

- The Cadastre of Real Estates including their inventory and description and their geometric specification and position. Parts of it are records of property and other material rights and other legally stipulated rights to these real estates.
- The current Cadastre of Real Estates is integrated in the Information System of the Cadastre of Real Estates (IS CRE) and represents one of the principle registers of state administration.



IS CRE

- Created in 1997-2001, Launch of operation in September 2001
- Complete renewal of IT infrastructure, Client / server architecture
- Central database and 107 local databases interconnected via WAN
- Replication of changes from local databases every two hours – central database is up-to-date
- Uniformity is ensured – the remote SW installation to all clients in one moment, replication of classifiers from the centre
- Possibility to view „historical“ and „future“ data
- Outputs are equipped with time of validity data
- Integration of written and mapping parts in one database ensures the mutual update written and mapping data



Further development of IS CRE

- Consolidation, centralisation of CRE
- Three tier architecture
- Easier implementation of new services
- Delayed by the cancellation of tender for new central HW, migration in the first half of 2010
- Part of the System of basic registers of the Czech Republic
- Implementation of the INSPIRE Directive

Current controls in the IS CRE

1. Basic format controls – inputs and outputs in IS (eg. in text fields, in textual exchangeable format etc.)
2. Control of content of IS CRE DB (eg. date is newer then 1/1/93)
3. Consistency controls – relations, obligation and eligibility of relations and object attributes
4. Topological controls of geometry
5. Independent checking – specific control procedures based on modules of the first four parts

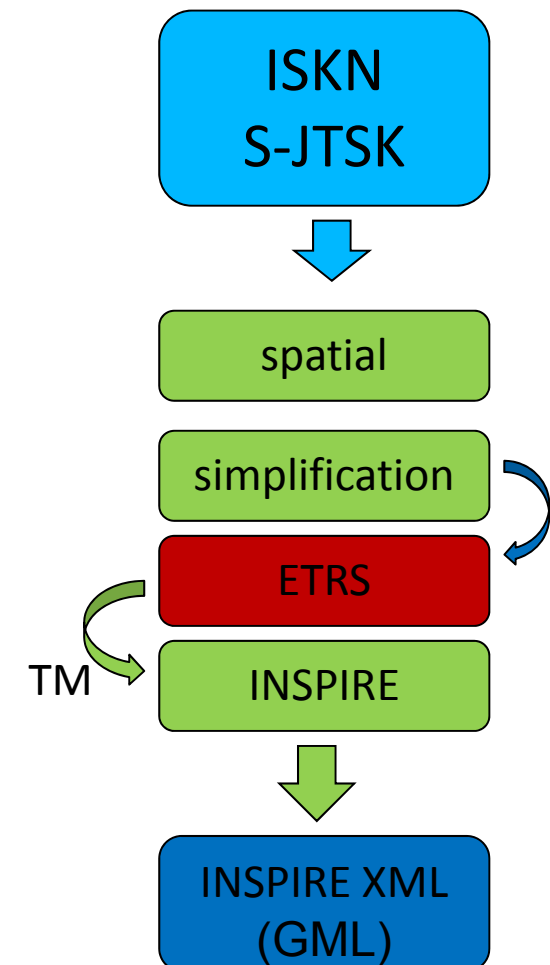


New data consistency checking methods in IS CRE

- New topological checking
- Logical and format consistency checking - Working group for solution of incorrect and incomplete records of IS CRE

Cadastral parcel – INSPIRE data model creation

- Data model
 - Boundary as a geometry (lines: left-right topology)
 - Other features have links to boundary **geometry** – representation of features as polygons
- IS CRE – old model x Publication DB – new data model -> INSPIRE compliant
- **Motivation: new errors in transformation process -> new data consistency methods - topological**



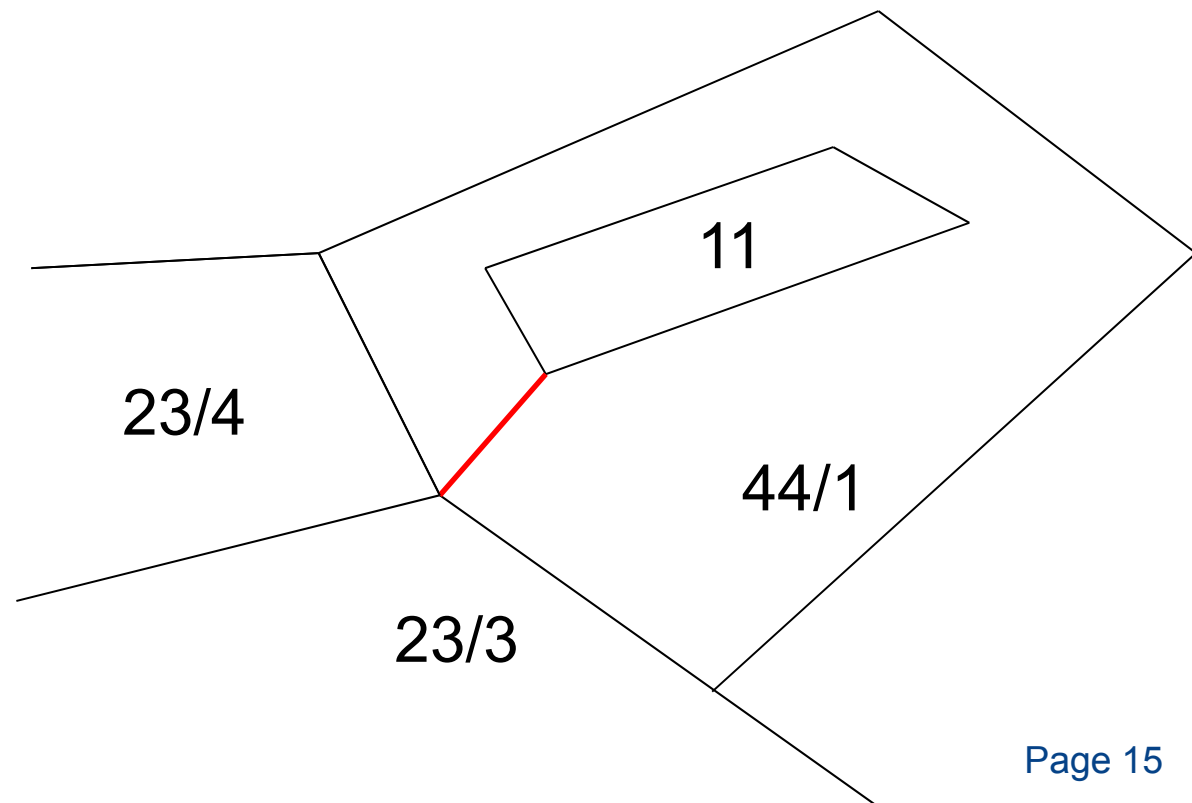
Results of errors identification Procedure

COSMC errors of topological consistency:

- No intersection points
- Spindles – in the left-right model of the boundary line is link to the same cadastral parcels
- Edge loops – not implemented yet
- Non valid geometries
- Duplicate, redundant map symbols
- Incorrect boundaries of buildings

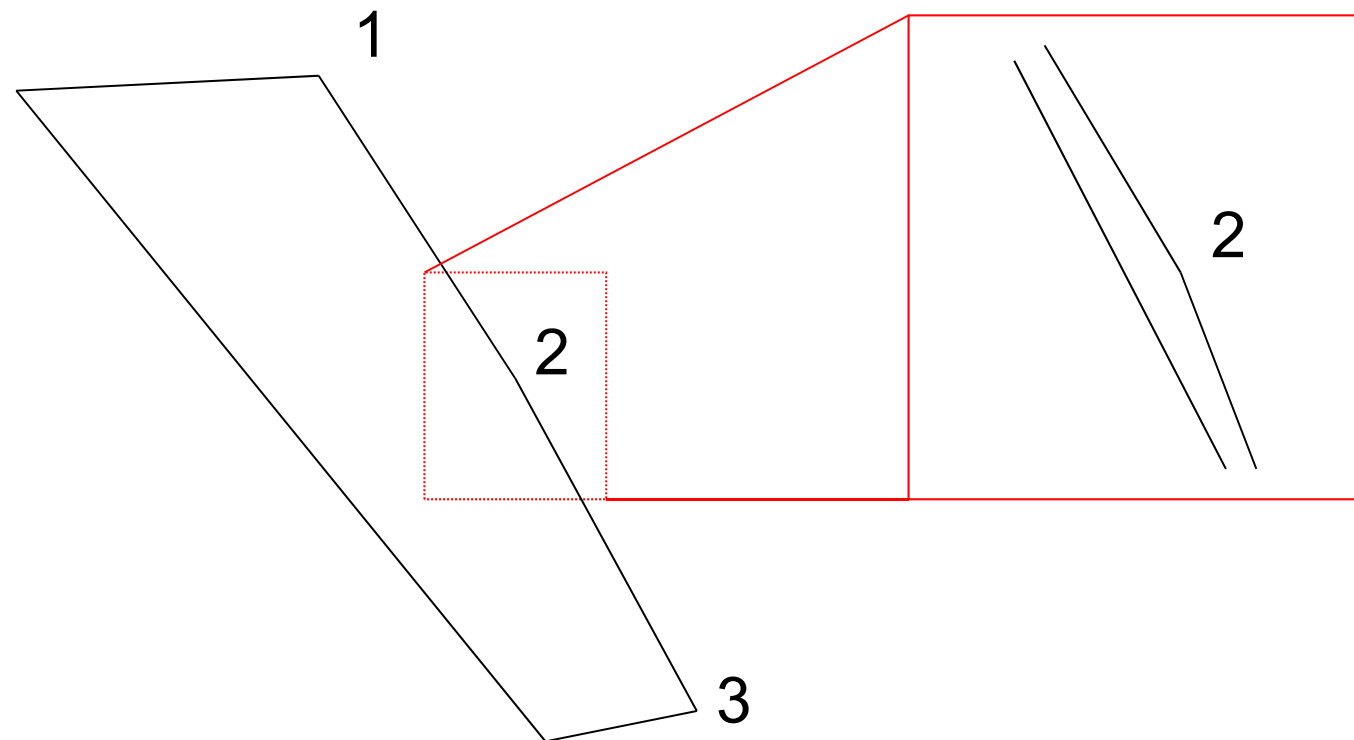
Implementation example 1

- Checking and repairing: Java functions and applications for Oracle database
- Example: spindles



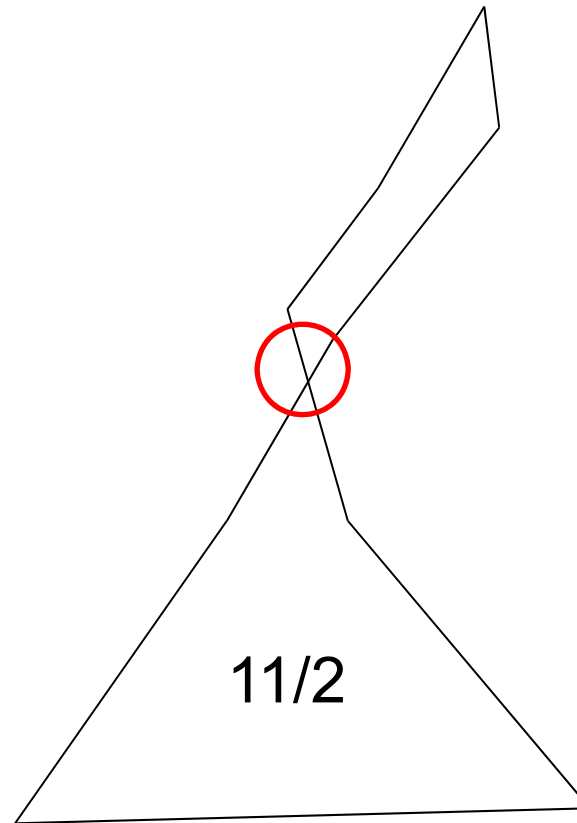
Example 2 - Empty polygons

New empty polygon between points 1-2-3



Edge loops

- Not implemented yet
- Lines of the parcel boundary cross lines of the same parcel boundary without intersections





Motivation

- Findings of errors in searching in the ISKN
- Incorrect execution transactions
- Outputs and issues with errors

- Main goal – to identify and to repair incorrect records in the IS CRE (complicated events)
- Logical and format consistency checking

Approach to identify new possible errors

- COSMC has to import and export data from/to another information systems (IS) – with another code list
- Example - problem of person identification from different IS:

| ID | First name | Surname | Personal ID |
|----|------------|---------|-------------|
| 1 | Petr | Mráček | 740711/1243 |
| 2 | Petr | Mracek | 7407111243 |
| 3 | Petr | Mracek | NULL |
| 4 | Petr | Mr84ek | 740711/1243 |



Working group for solution of incorrect and incomplete records of IS CRE

Main goals:

- To create detail analysis of IS CRE records (errors of content, errors of records structure)
- To design procedures and create schedule for their initiation
- To define priorities to repair errors step by step
- To define algorithms for detail data checking
- To design adjustments of IS CRE to minimize creation of new errors
- To cooperate with management department on fulfilment of the tasks



Historical background

- PE - personal entity (people)
- LE - legal entities (companies, entrepreneurs etc.)
- ARES – IS of „economical objects“ ~ legal entities (Ministry of Finance)

IS CRE basic function:

- To check data on owners against Registers of Inhabitants or Companies
- COSMC checked records in ISKN, then checked records in ISKN against records in ARES



Results I. – internal controls

- 4892 incorrect records of personal ID between cadastral workplaces
- 74 549 wrong records (format checking)
- 10 140 PE without obliged attributes
- 350 errors – format checking (personal ID x mod 11) and unspecified number of similar errors of ID of LE (mod 11)
- 11000 LE in ISKN without ID of LE



Results II. – external controls

- 299216 incorrect records of personal ID of inhabitants ARES
- Errors in names of LE has to be checked against ARES
- Entrepreneurs stored as personal entities (PE)
- 13164 records with possible error – has to be inspected (ID as 111111, 000000 etc.)
- 66 errors of date of birth (day or month)



First conclusions of the working group

- New rules will be defined and delivered as guidelines to all cadastral workplaces from Cadastral Offices management department
- New web site will be established with statistics and queues of data determined for checking
- Errors will be repaired automatically or manually (individual, singular errors)



Basic registry and quality

- System of 4 basic registries of Czech Republic (COSMC = Register of Territorial Identification, Addresses and real estates) + Registry of privileges, Registry of inhabitants, Registry of entities
- Law entered into force in March 2009
- Control between registries – complaints procedures (reclamation)
- COSMC is responsible for maintenance of addresses administrative units, streets spatial information (geometries) and their attributes



Conclusion

- Identified new topology and logical consistency methods because of:
 - Transformation of database model
 - Findings of errors in searching in the ISKN, in outputs and because of validation against external information systems
- New field for checking against data of Basic Registries in the near future across public administration



The Information System of the Cadastre of Real Estates – new data consistency checking methods

Tomas Cajthaml, COSMC



Big data warehouses in the COSMC

- IS CRE – basic data warehouse with cadastre of real estates agenda
- Smaller proprietary databases – publication DB, meta DB etc.
- ZABAGED database (production, cartographic and publication part of solution)
- Geoportal – presentation DB for purposes of INSPIRE, surveyors, public administration and other customers



**Template for exchanging experience on implementing
INSPIRE among members**



INSTRUCTIONS

Organisation/Country

Period Covered



- **Testing data and services**
 - How will your organisation assure that INSPIRE specifications are fulfilled?
- **Metadata profile**
 - Is there a national metadata profile based on the implementing rule?
- **Other main actions for implementing INSPIRE**
 - What other major actions have been taken for implementing INSPIRE?
- **Coming events**
 - Any plans or forthcoming events that may be of interest to Q-KEN?
- **INSPIRE at plenary meeting**
 - At the meeting in Dublin we will focus on the topic interoperability. What topic would you like us to discuss at the coming plenary meeting?

COSMC, Czech Republic

From June 2009 to November 2009



- **Testing data and services**
 - New metadata web editor was set up
 - Production systems are connected with Geoportal in testing phase
- **Metadata profile**
 - COSMC has own metadata profile, no national metadata profile exists
- **Other main actions for implementing INSPIRE**
 - Amendment of the INSPIRE law entered into force
 - Ordinances of the transposition Amendment are expected
- **INSPIRE at plenary meeting**
 - How is the harmonisation solved on national level abroad?
 - What is EU member states approach to licensing policy?



Template for National Report

INSTRUCTIONS

Organisation/Country

Period Covered



- **Data Quality and Quality management**
 - 1 or 4 Bullet Points outlining any:
 - developments, emerging issues and/or hot topics in this field of relevance to the Q-KEN
- **General information about Organisation**
 - 1 or 2 Bullet Points outlining any high level:
 - developments, emerging issues and/or hot topics that could be of interest to Q-KEN
- **Looking forward**
 - Any plans or forthcoming events that may be of interest to Q-KEN or;
 - that may emerge as issues in future reports
- **Feedback**
 - How have you, as an Q-KEN member, spread information from the last plenary meeting and from published reports, to others in your organisation.

COSMC, Czech Republic

From June 2009 to November 2009



- **Data Quality and Quality management**
 - COSMC has started orthophoto capturing with 25cm pixel size
 - Amendment of the Cadastral Ordinance –positional accuracy rules for observed points and counted parcels areas was clarified
- **General information about Organisation**
 - Building of Base Register of Territorial Identification, Addresses and Real Estates has started
 - COSMC has started preparation of the ordinance on digital technical map
- **Looking forward**
 - Metadata and quality information are going to be published on Geoportal COSMC web site
- **Feedback**
 - Report from last Q-KEN meeting was issued on intranet of the COMSC

| | | | | |
|-----------|--------------------|------------------|----------|--------------|
| File name | Dublin_minutes.doc | | | Příloha č. 5 |
| Version | Author | Date | Comments | |
| 1.0 | Jonathan Holmes | 02 December 2009 | | |

| | | | |
|--------------|-----------------------|----------------|-------------------------------|
| Chairperson | Carol Agius, Malta | | |
| Participants | <i>Name</i> | <i>Country</i> | <i>Organization</i> |
| Day 1-3 | Karl Haussteiner | Austria | BEV |
| Day 2-3 | Lies de Meulenaer | Belgium | IGN-B |
| Day 1-3 | Tomas Cajthaml | Czech Rep | COSMC |
| Day 1-3 | Claude Luzet | France | IGN-F |
| Day 1-3 | Heinz Bennat | Germany | BKG |
| Day 1-3 | Jonathan Holmes | Great Britain | Ordnance Survey |
| Day 1-3 | Ourania Mayrantza | Greece | HEMCO / KTIMATOLOGIO S.A. |
| Day 1-3 | Ken Noble | Eire | OSI |
| Day 1-3 | Arvids Ozols | Latvia | LGIA |
| Day 1-3 | Magni Busterud | Norway | Statens Kartverk |
| Day 1-3 | Marcin Grudzien | Poland | GUGIK |
| Day 1-3 | Jordi Escriu Paradell | Spain | ICC |
| Day 1-3 | Christina Wasström | Sweden | Lantmäteriet |
| Day 1-3 | Gunhild Lönnberg | Sweden | Lantmäteriet |
| Day 1-3 | Slavko Lemajić | Croatia | Croatian Geodetic Institute |
| Day 1-2 | Antti Jakobsson | Europe | EGHO |
| Day 1-3 | Geraldine Kavanagh | Eire | OSI |
| Day 1-3 | Peter Hallahan | Eire | OSI |
| Day 1-3 | Bernard Farrell | Eire | OSI |
| Day 2 | Erling Onstein | Norway | Statens Kartverk |
| Day 2 | Matt Beare | UK | 1Spatial |
| Day 2 | Jo Walsh | UK | EDINA |
| Day 2 | Jorma Marttinen | Finland | Geoaudit Oy |
| Day 2 | Frederique Williams | France | IGN |
| Day 2 | Jaana Mäkelä | Finland | Helsinki Technical University |

1 Decisions and Action Minutes

| Number | Action / Finding | Name & Date |
|--------|---|-------------|
| 1 | Bernard Farrell from Ordnance Survey Ireland welcomed the Quality Knowledge Exchange Network to Dublin. | |
| 2 | Actions from Previous Minutes (Hamar May 2009) | |
| 2.1 | 3.1. It was agreed that the NWIP document (PPM Accreditation) would be distributed to all members for information in January. Christina will send the document to all members. Done | |
| 2.2 | 3.2. Jordi gave a very interesting presentation on the proposal for a New Quality Control system for the 3D 1:1000 mapping at the meeting in Barcelona. Claude agreed to translate the summary into English. Done Carol will check the English spelling and then distribute the summary to the whole group Done | |
| 2.3 | 3.3. Karl presented on change detection from Imagery in Austria at the meeting in Barcelona. Karl will present the result at the next plenary meeting. Done CC will include the presentation in the agenda for the meeting in Ireland. Done | |
| 2.4 | 3.4. Christina presented the status of Inspire in each of the countries focusing on main actions, coming events and topics to be discussed at plenary meetings. CC to review and take up at future plenary. Done | |
| 2.5 | 3.5. The group listened to the presentation from Seb Lessware on the OGC Working Group on Data Quality Carol to distribute the results from the survey on the OGC working group on Data Quality to all members. Not Done. Jonathan will distribute. Done | |
| 2.6 | 3.6. In Eurogeographics Strategic Goal 3 we could revisit the BM on SABE update processes (from Czech Rep 2004) which may be useful to the SBE project. CC to take this forward. Not done | CC |
| 2.7 | 3.7. Action to all – consider translations of 19100 and Accreditation report. There are still some translations that are missing. Done Jonathan and Christina to distribute and collate replies. Jonathan and Christina will send a reminder to translate BM report and guidelines Done | |
| 2.8 | 3.9. Carol will try to go through the specs (annex I) and send comments to all others and reply via Eurogeographics. If that is not possible, each member will give comments from members organisation with comments possibly copied to Eurogeographic Ho for information. Jonathan did a study on the quality parts. He will send his comments to the whole group. Done | |

| Number | Action / Finding | Name & Date |
|--------|---|-------------|
| 2.9 | <p>3.11. Carol to contact Patricia to ensure that new members have access to the members only section of the web site. Done</p> <p>Carol will after each meeting ensure that new members will have access to the web site. Ongoing</p> | |
| 2.10 | <p>5. Christina presented a summary of the 17 national reports that were received</p> <p>From these presentations the following topics were selected for national presentation at the next meeting in Dublin; Done</p> <ul style="list-style-type: none"> • Greece: Development of new quality evaluation methods for assessing the spatial / thematic accuracy, as well as the correctness of the spatial and thematic (legal) information for the spatial datasets that would result from the upcoming cadastral survey projects. • Croatia: Quality control system (NSDI) • Czech republic: The Information System of the Cadastre of Real Estates – new data consistency checking methods <p>All were encouraged to read all the reports when they are made available. Done</p> | |
| 2.11 | <p>7. INSPIRE/EG questionnaire presentation – Transposition status. Antti does not have the report yet. Antti will find out when it will be available. Discharged</p> | |
| 2.12 | <p>14. Quality Evaluation BM</p> <p>Two suggestions were offered for discussion</p> <p><i>Suggestion 1</i> Investigate the feasibility of implementing the ESDIN WP8 quality model.</p> <p><i>Suggestion 2</i> Identification of what quality elements are measured?</p> <p>CC will discuss these two options further. There is the possibility of doing both of these. Discussion to take place before the next CC meeting in London Done</p> | |
| 2.13 | <p>15. Conclusions</p> <p>Use webinar to inform Q-KEN about ESDIN project. No longer required.</p> | |
| 2.14 | <p>16. New developments with Quality Group</p> <p>CC set up the list for technical exchange Done</p> <p>Action to all to send proposals for discussion via Webinar to either Carol or Jonathan Done</p> <p>CC will decide on what technique should be used. Done</p> <p>EuroGeographics web sites are divided into three parts. There is a special part for sharing documents and it will also support a forum for discussions. Action to CC to decide on how to produce a quick guide to our reports and documents on the web site Done</p> | |
| 2.15 | <p>17. Future Plenary meetings</p> | |

| Number | Action / Finding | Name & Date |
|--------|--|--|
| | <p>Autumn 2009 meeting will be in Dublin 30 Nov - 2 Dec.</p> <p>There is a possibility that the spring 2010 meeting will be held in Belgium. Lies to investigate this as a possibility and inform Carol. Confirmed next meeting will be in Belgium</p> <p>Volunteers for future meetings – possibly France or Poland. Claude and Marcin to consider if this would be a possibility Done</p> <p>Jonathan will distribute practical information about organising a plenary meeting to all members Done</p> | |
| 2.16 | <p>20 Q-KEN working groups</p> <p>There was a proposal that a member should be able to take part in two WGs. CC will discuss if this could be solved practically. Done</p> | |
| 2.17 | <p>20.1 INSPIRE Working Group ToR and list of WG members were updated according to presentation (see also WG quality evaluation) Christina will update the ToR for INSPIRE WG Done</p> | |
| 2.18 | <p>20.2 Quality Evaluation Working group</p> <p>Jonathan will update the ToR for Quality evaluation WG Overtaken by events at the CC meeting in September</p> | |
| 3 | <p>Other notes from Carol's introduction</p> <p>Future Meetings</p> <p>The next meeting will be in Belgium 5 - 7 May 2010</p> <p>Following meetings will be:</p> <p>Autumn 2010 – France (possibly Paris) Claude to confirm location.</p> <p>Spring 2011 – Poland</p> <p>Autumn 2011 – possibly Croatia</p> <p>The next CC meeting will be a combined workgroup / CC meeting 24th – 26th March. Location to be confirmed.</p> <p>There is a need to update the “Organising a Plenary” notes.</p> <p>Carol informed the group that Lysandros was no longer a member of the group. Greece will be represented by Ourania.</p> <p>Vilma from Lithuania has informed the group that she hopes to be back with the group at the next meeting in Belgium.</p> | <p>Claude</p> <p>CC</p> <p>Carol / Ken</p> |
| 4. | <p>Update from the CC meeting in London</p> <p>Two members were invited to join the CC. Celia has agreed to join. The one other member is awaiting approval from their organisation.</p> | |

| Number | Action / Finding | Name & Date |
|--------|---|-----------------------------|
| | It was agreed at the CC that the working groups would be reformed and that there would be specific presentations and activities (such as benchmarks) as and when they were required. | |
| 5 | <p>News from Head Office</p> <p>Antti gave a presentation on the latest from head office.</p> <p>Key points raised were: The creation of regional conferences. For 2010 these will be in the Balkan area and in the Nordic region. Perhaps a member from Q-Ken will be able to present?</p> <p>Head office will move to Brussels in 2010</p> <p>The call for experts for Annex II and III of the INSPIRE regulations has gone out.</p> | |
| 6 | <p>National presentations</p> <p>Excellent presentations were given by:</p> <p>Ourania, who presented on the development of new quality evaluation methods for assessing the spatial / thematic accuracy in Greece.</p> <p>Slavko, who presented on the new Quality Control system in Croatia.</p> <p>Tomas who presented on new data consistency checking methods in Czech Rep.</p> | |
| 7 | <p>Terminology</p> <p>Ourania presented some updates to the terminology document.</p> <p>Ourania to update the document following the comments made by the group and to pass to Carol.</p> <p>Carol to post on the website.</p> | <p>Ourania</p> <p>Carol</p> |
| 8 | <p>Inspire Working Groups</p> <p>Christina introduced the topic which had the theme of Interoperability. The group split into three and results from these were presented by Ourania, Christina and Jordi.</p> <p>It was agreed that ESDIN would resolve some of the issues identified. The group will pick up the activity post ESDIN to see what needs to be done and what could be done. Jonathan to add to the long term plan for post 2011.</p> | Jonathan |
| 9. | <p>Future Presentations</p> <p>It was agreed that the presentations at the next meeting would be from</p> <p>Ireland on “Embedding effective management systems in public sector organisations”</p> <p>GB on “New Agency Performance monitors”</p> | <p>Ken</p> <p>Jonathan</p> |

| Number | Action / Finding | Name & Date |
|--------|--|---|
| | <p>Poland (Re-writing of spatial data models) and Austria (On line customer satisfaction survey) will assess the current status of these topics and let Carol know if they are able to present in Belgium. If not, they will present in the Autumn.</p> <p>Carol will invite Finland to give a presentation on the Finnish Quality Award that they won recently.</p> <p>At the next meeting there will also be an update on PPM (ISO19158)</p> <p>Spain to present on the collaboration they have been doing with Andorra, Portugal and France with regards to SDI's"</p> | <p>Marcin and Karl</p> <p>Carol</p> <p>Antti</p> <p>Celia / Jesus</p> |
| 10 | <p>ESDIN project</p> <p>Antti gave an update on the current status of the ESDIN project.</p> <p>The external reviewers were reasonably happy with the progress of the project but warned about being too ambitious. Most WP are progressing well with only a few being slightly behind schedule.</p> <p>Antti also presented on WP8, in particular the general approach to quality evaluation and semi automatic evaluation.</p> <p>Jorma and Jaana presented the ESDIN quality model.</p> <p>Frederique updated the group on the metadata guidelines.</p> <p>Antti led the group discussion on how the QKEN can act as a reference group to ESDIN.</p> | |
| 11 | <p>Next Benchmarking Exercise</p> <p>Jonathan led the discussion on the next benchmarking exercise.</p> <p>The CC had already agreed that the group would evaluate the feasibility of implementing the ESDIN model. The core aims of the exercise would be to:</p> <ul style="list-style-type: none"> • To see if it is possible to implement the model • To identify issues with the model • To identify potential costs with the implementation <p>There would also be a core aim of completing the exercise by the next plenary in Belgium. It was clear that the dates that were put forward by Jonathan were unachievable as the latest versions of the excel spreadsheets wouldn't be available until the end of January.</p> <p>The revised timetable was agreed as follows.</p> <p>Deadline for nominations to take part – Jan 15th Produce and release questionnaire by Feb 12th Respond to questionnaire by Mar 19th Workshop 24th – 25th March location to be agreed Produce first draft by 9th April Review by 16th April Produce second draft by 23rd April Review and final comments by 30th April</p> | |

| Number | Action / Finding | Name & Date |
|--------|---|-------------|
| | <p>Present at plenary 5th – 7th May</p> <p>Ourania agreed to be secretary. Other members who agreed to take part were</p> <p>Ken – Ireland Christina / Gunhild – Sweden Jordi – Spain Norway</p> <p>France, Malta, Austria and Croatia are still considering participating. Action – all to confirm participation to Jonathan by 15th Jan at the latest but preferably before Xmas</p> | All |
| 12 | <p>OGC Data Quality Workgroup</p> <p>Matt Beare updated the group on the work of the OGC Data Quality work group</p> | |
| 13 | <p>Inspire Update / Reports</p> <p>Christina updated the group on the current status of INSPIRE.</p> <p>This was followed with an update on the current status of INSPIRE in each country.</p> <p>Christina agreed to summarise the information on what question will be raised for the next meeting and make it available on the web.</p> | Christina |
| 14 | <p>Presentation from Devonor</p> <p>Bjorn Krangnes presented Spatial Studio to the group. The software demo was well received by the group and there were several follow up questions.</p> | |
| 15 | <p>Host Presentations</p> <p>Bernard Farrell presented on future developments at Ordnance Survey Ireland in particular the Prime 2 database. If anyone requires any further information then they should contact Ken.</p> | |
| 16 | <p>Status of Quality Standards</p> <p>Gunhild presented an update on the current status of ISO19157 (Data Quality), ISO19158 (Quality Assurance of Data Supply) and ISO19115 (Metadata).</p> <p>A new term “Geodata” has been proposed by Sweden. If accepted then this term needs to be added to the glossary.</p> | |
| 17 | <p>Benefits of membership</p> <p>Carol spoke about the benefits of membership.</p> <p>The presentation was centred on the communication strategy using Knowledge, Exchange and Network as the three themes.</p> <p>Access to the Eurogeographics website. Any member who does not have</p> | All |

| Number | Action / Finding | Name & Date |
|--------|--|---|
| | <p>access will need to re-register to get new login details. All to resolve any problems.</p> <p>The QKen pages are under “About Us” on the new website. This is not ideal but cannot be changed in the short term.</p> <p>The Eurogeoforums were also introduced. These could be used for the upcoming benchmark activity.</p> <p>Carol introduced the Quality Practitioner Certificate. There are five criteria that must be met.</p> <ul style="list-style-type: none"> • Be an active, full member of the Q-Ken for a minimum of 3 years • Attend 4 out of 6 plenary meetings • Participate in one benchmarking exercise or workshop • Make one regular presentation at a plenary meeting • Make one special presentation at plenary that results in a contribution to the Q-Ken library. (e.g. a BM report, a case study, contribution to the handbook, report on personal research etc.) <p>Carol to send out information on how to apply for the certificate by end of Jan.</p> <p>Carol agreed to get a forum set up for the benchmarking exercise by end of Jan.</p> <p>CC to discuss whether a certificate can be made available to the organisation.</p> <p>Personal Exchange – CC agreed that this was something that they wish to support but felt that they could facilitate. However, everyone was encouraged to make the approach to the organisation that they wish to visit via the contact on the Q-Ken group.</p> <p>Webinars – The group will run webinars which can be of a technical theme as demonstrations can be given. Carol gave a demonstration of the Go-ToMeeting software.</p> <p>First Webinar will be “How do you present quality information in your NMCA?” 25th February 2010 at 10:00 CET.</p> <p>Volunteers to present were Jonathan, Tomas (if he gets permission) and Jordi. Presentations to be a maximum of 15 mins long to allow for questions.</p> <p>A trial webinar needs to be set up approx 10 days beforehand</p> | <p>Carol</p> <p>Carol</p> <p>CC</p> <p>All to action if desired</p> <p>Antti</p> <p>Jonathan, Tomas and Jordi.</p> <p>Antti</p> |
| 18 | <p>Other Actions</p> <p>Group work that is done at a plenary should be discussed via a forum beforehand so that members come to the meeting prepared for the discussion.</p> <p>Carol to identify a location where photos of the meetings can be posted.</p> <p>Carol to send out an updated circulation list to everyone.</p> | <p>CC</p> <p>Carol</p> <p>Carol</p> |

| Number | Action / Finding | Name & Date |
|---------------|--|------------------------|
| 19 | Long Term Plan Jonathan presented an update on the long term plan for the Q-Ken. | |

End

| Q-KEN Members | | |
|------------------------------|----------------|--|
| <i>Member</i> | <i>Country</i> | <i>e-mail</i> |
| Karl Haussteiner | Austria | karl.haussteiner@bev.gv.at |
| Lies De Meulenaer | Belgium | ldm@ngi.be |
| Tomas Cajthaml | Czech Republic | tomas.cajthaml@vugtk.cz |
| Claude Luzet | France | claudio.luzet@ign.fr |
| Heinz Bennat | Germany | heinz.bennat@bkg.bund.de |
| Christian Elsner | Germany | christian.elsner@bezreg-koeln.nrw.de |
| Jonathan Holmes | Great Britain | jonathan.holmes@ordnancesurvey.co.uk |
| Ourania Mavrantza | Greece | omavratz@ktimatologio.gr |
| Forgács Zoltán | Hungary | forgacs.zoltan@fomi.hu |
| Kenneth Noble | Ireland | kenneth.noble@osi.ie |
| Geraldine Kavanagh | Ireland | geraldine.kavanagh@osi.ie |
| Arvids Ozols | Latvia | arvids.ozols@lgia.gov.lv |
| Vilma Zmuidiene | Lithuania | v.zmuidiene@agi.lt |
| Carol Agius | Malta | carol.agius@mepa.org.mt |
| Magni Busterud | Norway | magni.busterud@statkart.no |
| Marcin Lebiecki | Poland | marcin.lebiecki@guqik.gov.pl |
| Marcin Grudzien | Poland | marcin.grudzien@codgik.gov.pl |
| Irena Azman | Slovenia | irena.azman@gov.si |
| Celia Sevilla Sánchez | Spain | cssanchez@fomento.es |
| Jesus Celada | Spain | jcelada@fomento.es |
| Jordi Escriu Paradell | Spain | jordi.escriu@icc.cat |
| Gunhild Lönnberg | Sweden | gunhild.lonnberg@lm.se |
| Christina Wasström | Sweden | christina.wasstrom@lm.se |
| | | |
| Corresponding Members | | |
| Jean Théâtre | Belgium | jth@ngi.be |
| Pierrette Fraisse | Belgium | pierrette.fraisse@minfin.fed.be |
| Slavko Lemajic | Croatia | slavko.lemajic@cgi.hr |
| Ivan Aleksic | Croatia | aleksic@grf.bg.ac.yu |
| Luljeta Vuthi | Kosovo | akk@ks-gov.net |
| João Cordeiro Fernandes | Portugal | jcordeiro@igeo.pt |
| Stefan Flury | Switzerland | stefan.flury@swisstopo.ch |
| | | |
| EGHO | | |
| Dave Lovell | EGHO | dave.lovell@eurogeographics.org |
| Antti Jakobsson | EGHO | antti.jakobsson@eurogeographics.org |
| Patricia Sokacova | EGHO | patricia.sokacova@eurogeographics.org |
| | | |