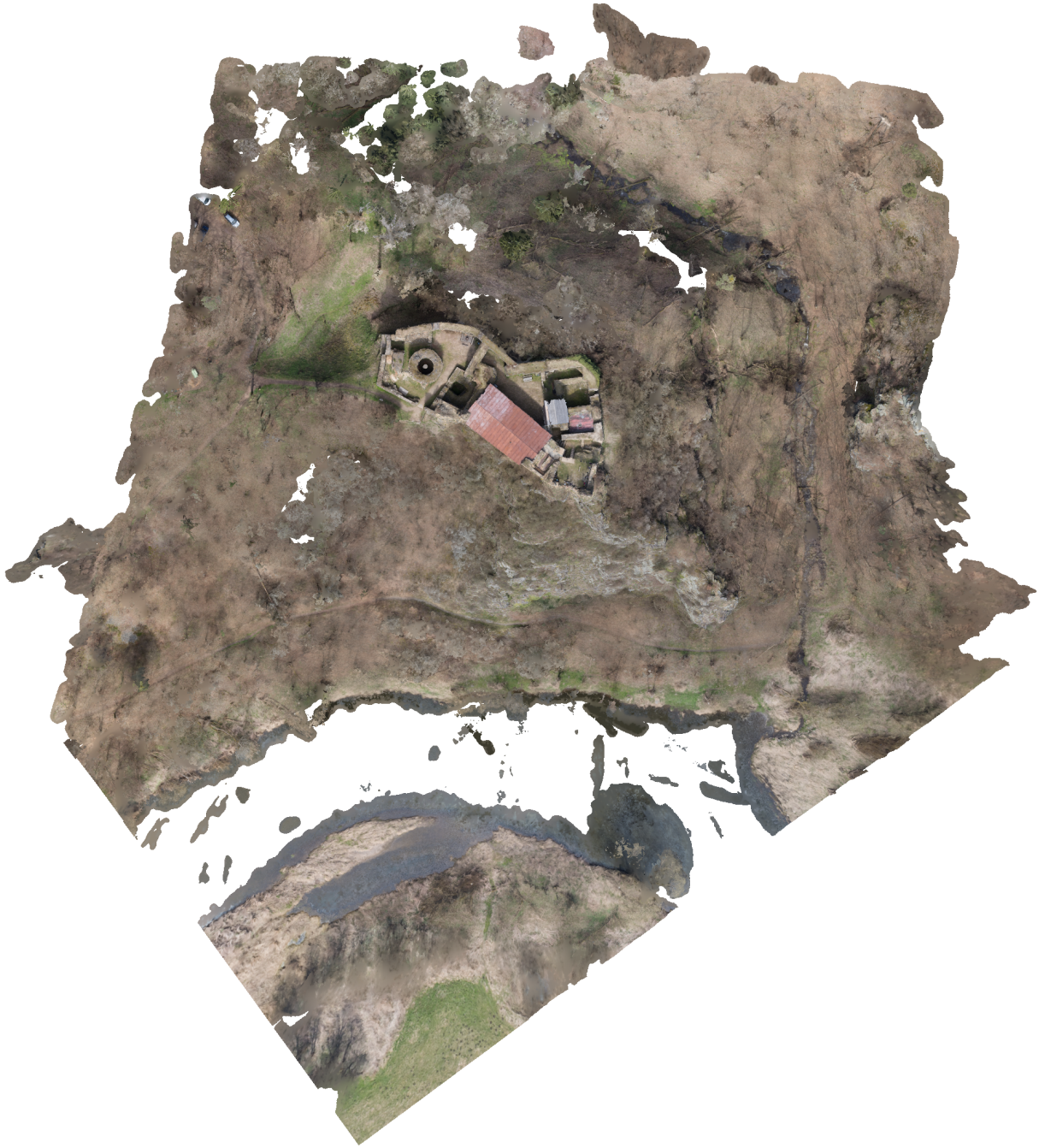


Agisoft PhotoScan

Processing Report

12 May 2015



Survey Data

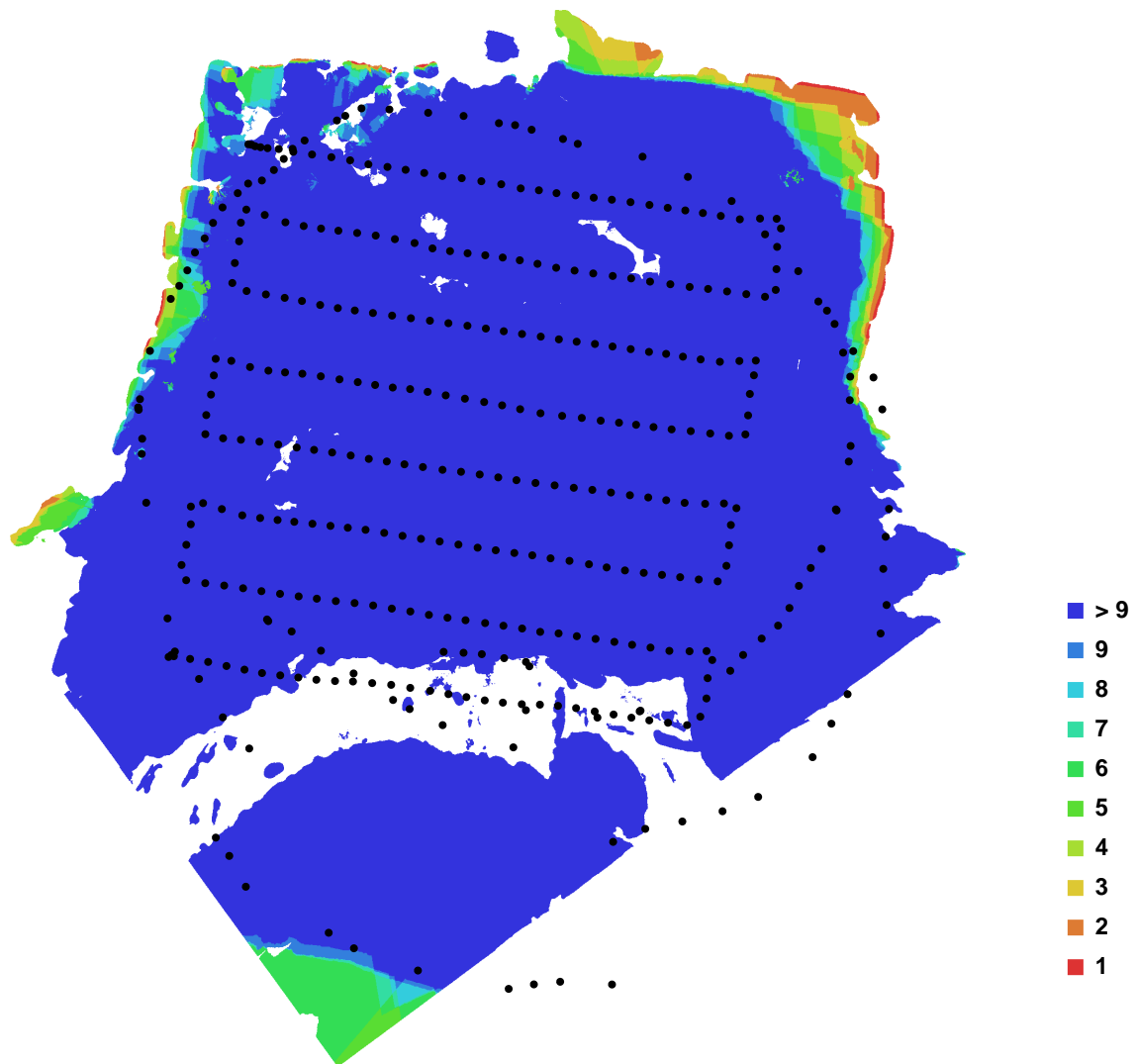


Fig. 1. Camera locations and image overlap.

Number of images:	371	Camera stations:	371
Flying altitude:	99.3137 m	Tie-points:	60402
Ground resolution:	0.0148816 m/pix	Projections:	292131
Coverage area:	0.0407346 sq km	Error:	0.749005 pix

Camera Model	Resolution	Focal Length	Pixel Size	Precalibrated
Canon EOS 700D (28 mm)	5184 x 3456	28 mm	4.384 x 4.384 um	Yes

Table. 1. Cameras.

Camera Calibration

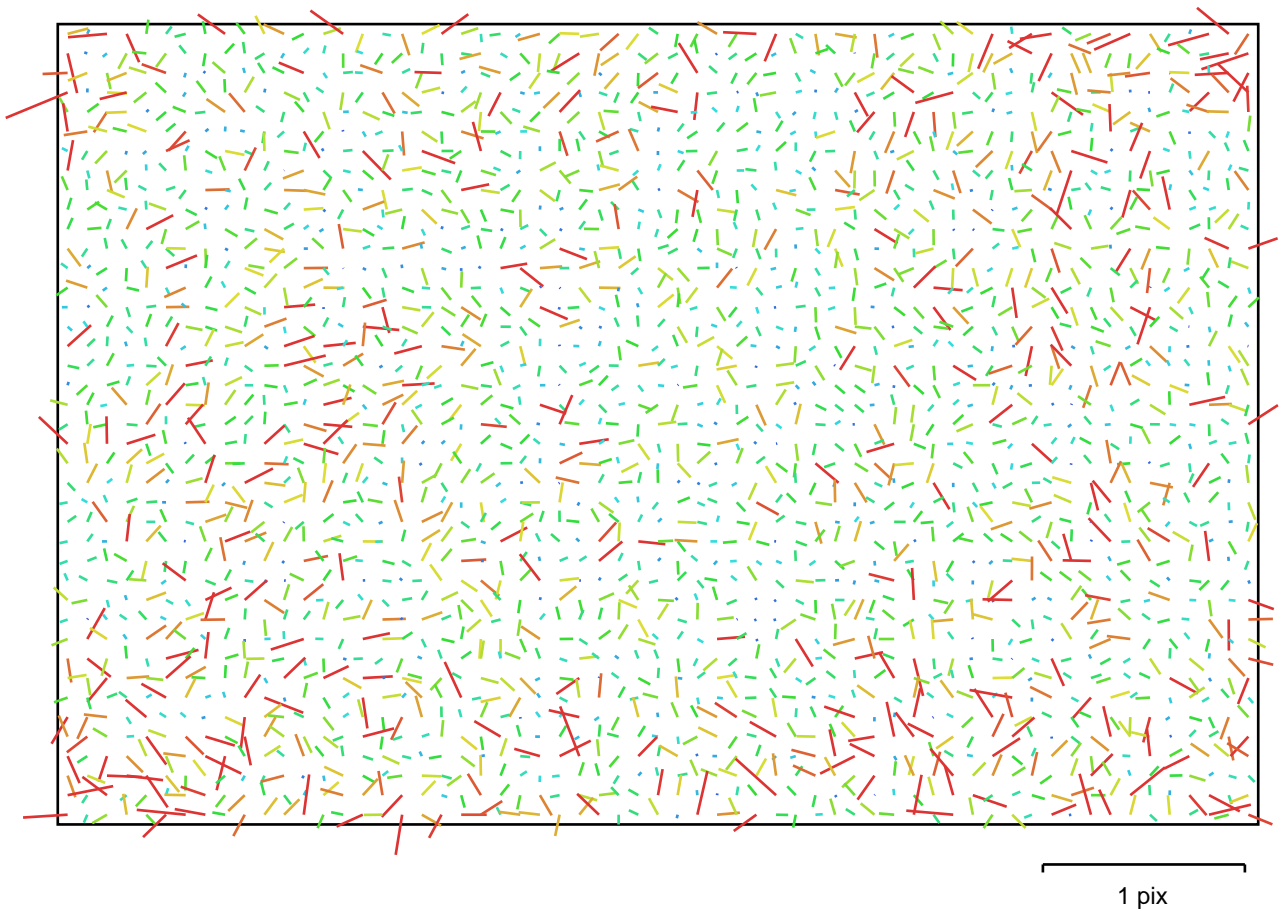


Fig. 2. Image residuals for Canon EOS 700D (28 mm).

Canon EOS 700D (28 mm)

Type:	Frame	K1:	-0.107256
Fx:	6609.08	K2:	0.168891
Fy:	6609.29	K3:	-0.0170993
Cx:	2596.72	K4:	-0.171766
Cy:	1748.76	P1:	0.000547638
Skew:	-0.322833	P2:	-6.87469e-005

Camera Locations

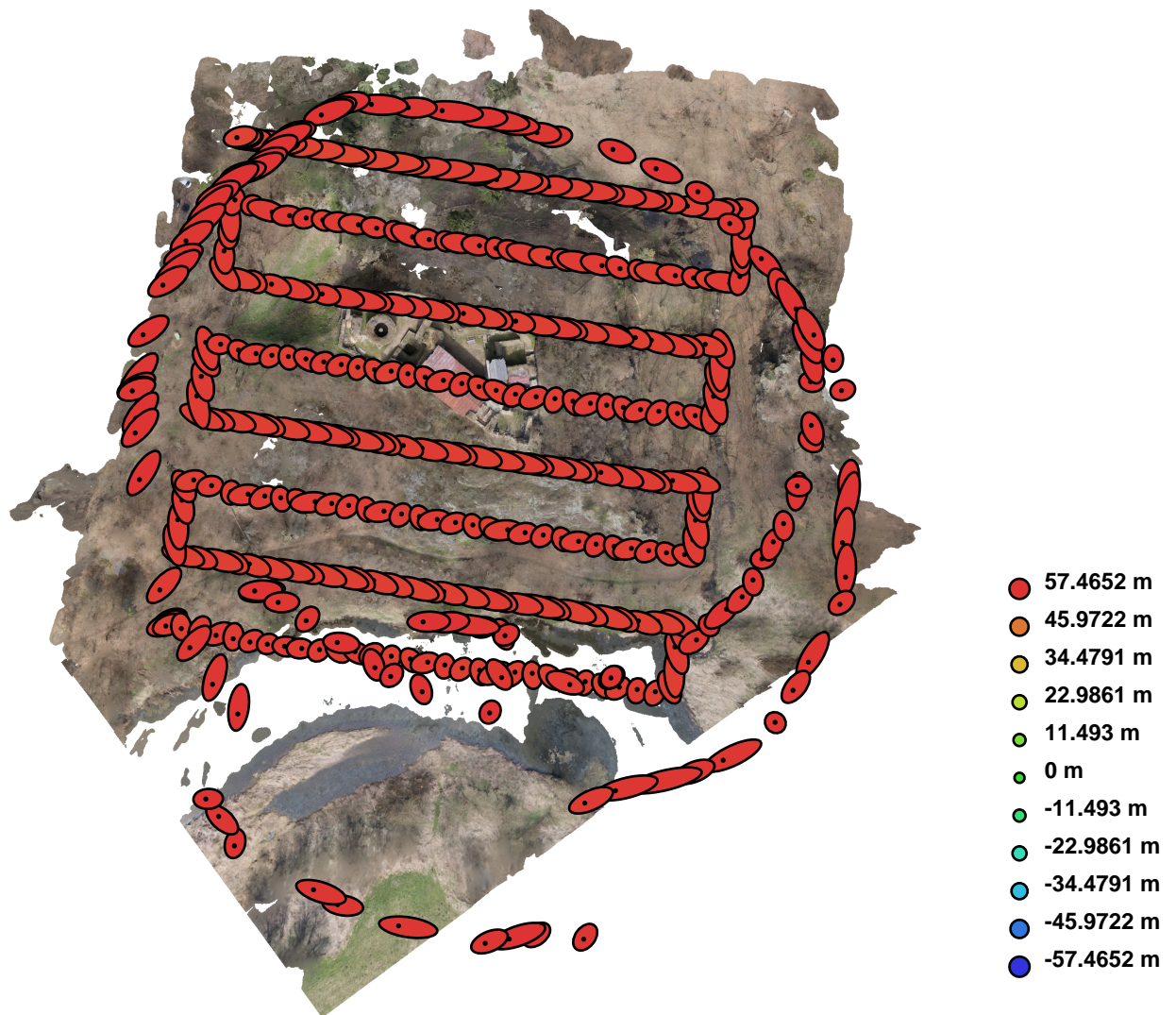


Fig. 3. Camera locations and error estimates.

Z error is represented by ellipse color. X,Y errors are represented by ellipse shape.

Estimated camera locations are marked with a black dot.

X error (m)	Y error (m)	Z error (m)	Total error (m)
2.362906	1.434333	55.702134	55.770677

Table. 2. Average camera location error.

Ground Control Points

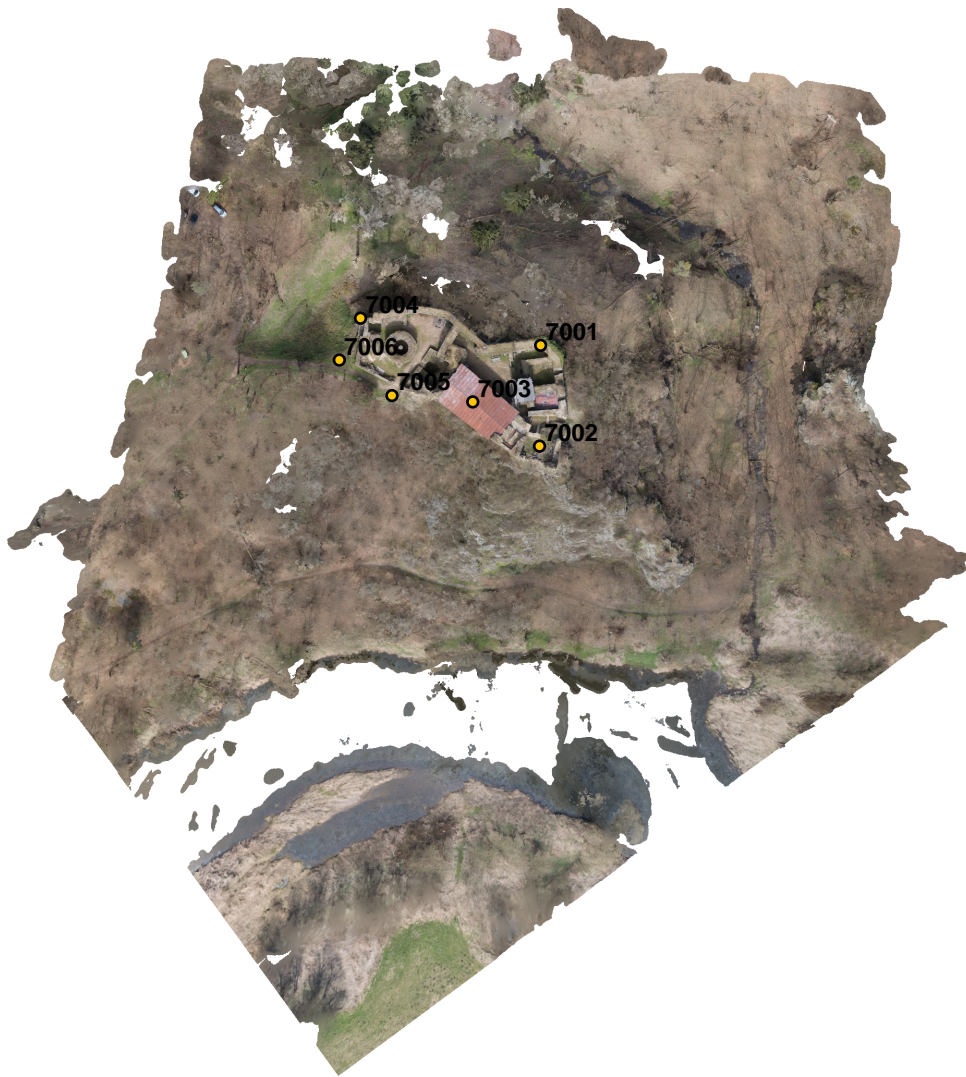


Fig. 4. GCP locations.

Label	X error (m)	Y error (m)	Z error (m)	Error (m)	Projections	Error (pix)
7001	-0.031495	-0.016967	-0.008166	0.036695	94	0.160523
7002	0.034574	0.025124	0.003485	0.042881	64	0.181553
7003	-0.015411	-0.031784	-0.001361	0.035349	97	0.217804
7004	0.018508	0.036850	0.010682	0.042598	48	0.150337
7005	-0.009969	0.003520	0.000313	0.010576	64	0.215981
7006	0.003932	-0.016745	-0.010103	0.019948	65	0.178195
Total	0.021917	0.024427	0.007035	0.033564	432	0.187993

Table. 3. Control points.

Digital Elevation Model

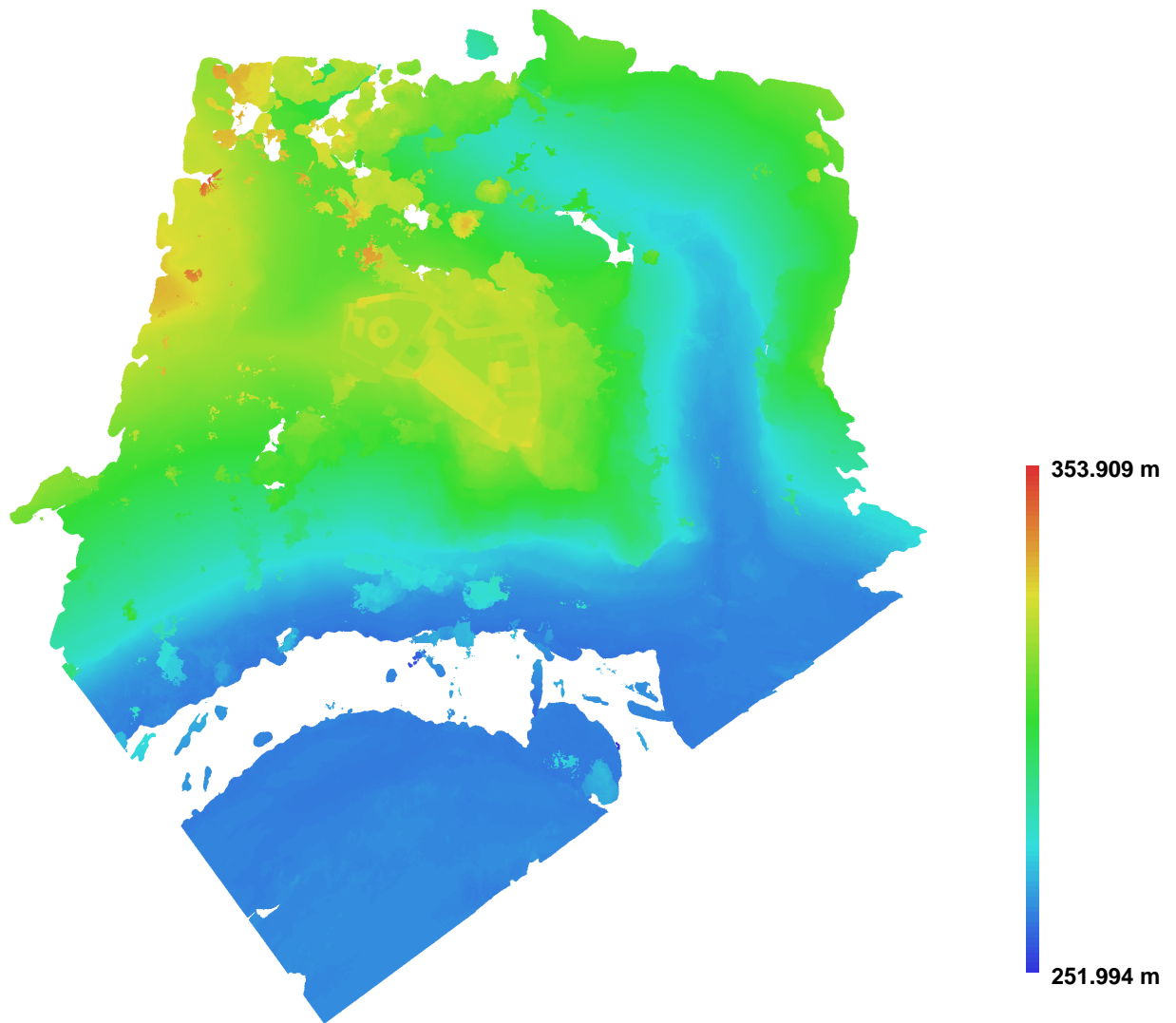


Fig. 5. Reconstructed digital elevation model.

Resolution: 0.0297633 m/pix
Point density: 1128.86 points per sq m